

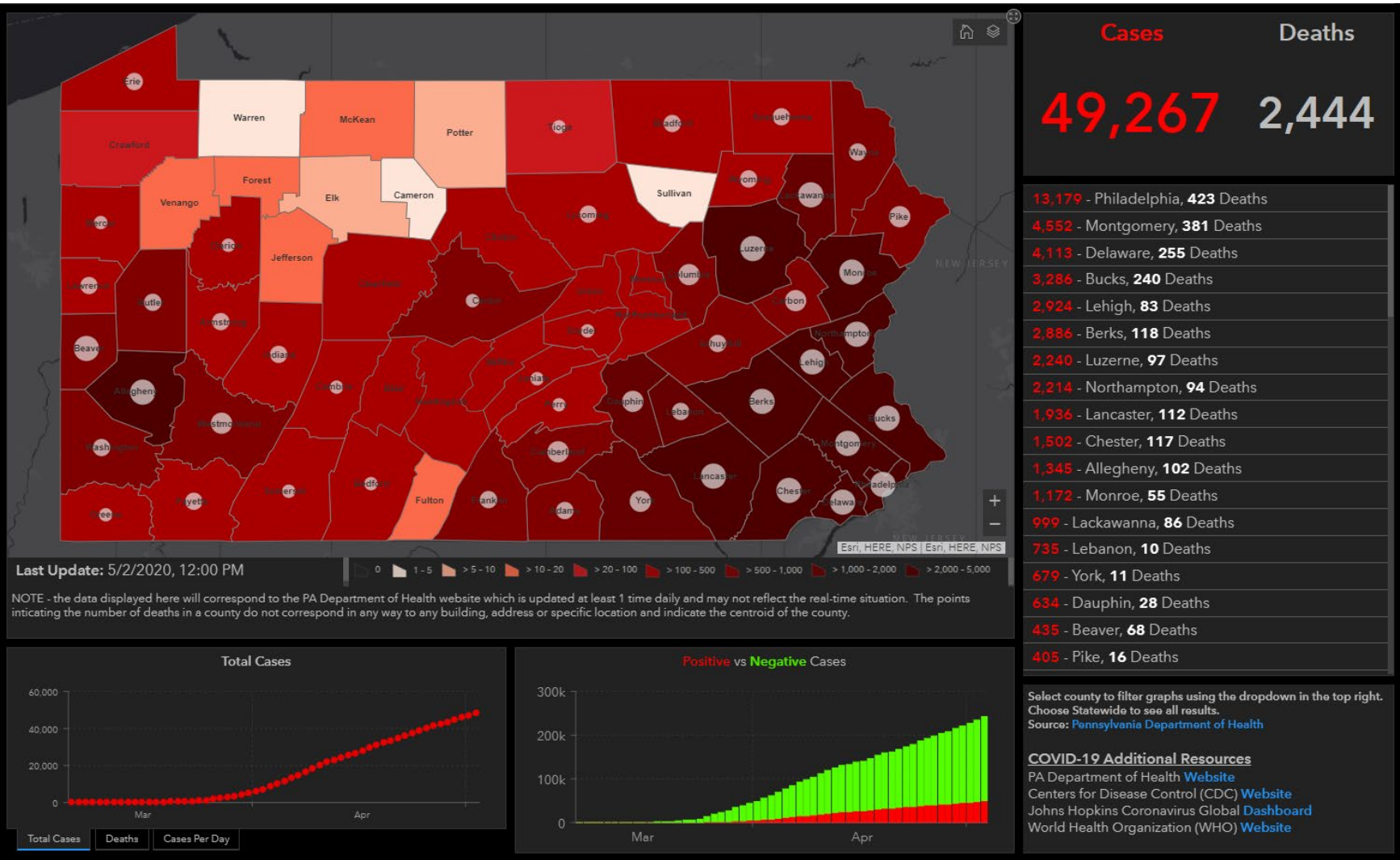


COVID-19 Senior Leaders Brief – May 4, 2020



Confirmed Cases

- Philadelphia –13,179 (+231) (423)
- Montgomery – 4,552 (+65) (381)
- Delaware – 4,113 (+114) (255)
- Bucks – 3,286 (+104) (240)
- Lehigh – 2,924 (+28) (83)
- Berks – 2,886 (+76) (118)
- Luzerne – 2,240 (+29) (97)
- Northampton – 2,214 (+32) (94)
- Lancaster – 1,936 (+32) (112)
- Chester – 1,502 (+33) (117)
- Allegheny – 1,345 (+12) (102)
- Monroe – 1,172 (+7) (55)
- Lackawanna - 999 (+31) (86)
- Lebanon – 735 (+25) (10)
- York – 679 (+15) (11)
- Dauphin – 634 (+17) (28)
- Beaver – 435 (+0) (68)
- Pike - 405 (+11) (16)
- Westmoreland – 401 (+5) (26)
- Schuylkill – 395 (+11) (7)
- Cumberland – 373 (+8) (18)
- Franklin – 351 (+26) (8)
- Columbia – 291 (+1) (13)
- Carbon – 183 (+1) (15)
- Butler – 180 (+0) (6)
- Adams – 145 (+4) (4)
- Washington – 119 (+1) (2)
- Wayne – 109 (+5) (5)
- Centre – 102 (+6) (1)
- Northumberland – 99 (+1)
- Erie – 91 (+1) (2)
- Juniata – 86 (+2) (1)
- Lycoming – 85 (+4) (2)
- Susquehanna – 85 (+1) (9)
- Fayette – 83 (+1) (4)
- Indiana – 69 (+6) (4)
- Mercer – 66 (+0) (1)
- Lawrence – 65 (+0) (6)
- Huntingdon – 56 (+8)
- Armstrong – 52 (+0) (2)
- Montour – 50 (+1)
- Mifflin – 39 (+1)



Activated State Agencies & Partner Agencies

- American Red Cross
- Dept. of Aging
- Dept. of Agriculture
- Dept. of Banking
- Dept. of Community and Economic Development
- Dept. of Corrections
- Dept. of Drug and Alcohol Programs
- Dept. of Education
- Dept. of Environmental Protection
- Dept. of General Services
- Dept. of Health
- Dept. of Human Services
- Dept. of Labor and Industry
- Dept. of Military and Veterans Affairs
- Dept. of Transportation
- Insurance Commission
- Office of Administration
- PA Office of Homeland Security
- PA State Police
- Public Utility Commission
- Turnpike Commission
- FEMA
- PA VOAD

COVID-19 Summary by Expense Type (as of May 3)

- Personnel: \$18,916,649.65
- Operational: \$67,817,859.33
- Total: \$86,734,508.98

State Agencies Updates

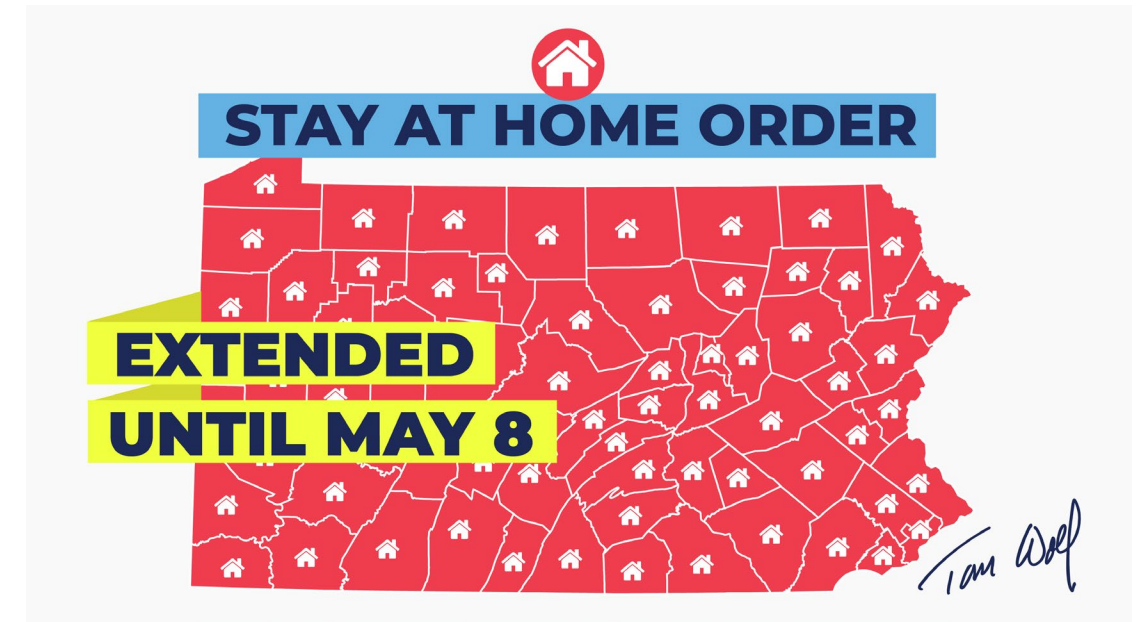
- As of 12:00 p.m. on May 3, there were **1,207 (-4)** National Guard members supporting missions statewide.
- On May 2, L&I issued a reminder to all self-employed, independent contractors, gig workers, or otherwise not normally eligible for regular unemployment compensation (UC) to apply under Pennsylvania's Pandemic Unemployment Assistance (PUA).
- On May 2, DCNR announced a phased reopening of state park and forest facilities in conjunction with Governor Wolf's phased reopening plan. Reopening will include mitigation efforts to ensure park visitors can safely enjoy outdoor recreation to maintain positive physical and mental health.
- The PSERS board moved to temporarily pause the 95-day per year limit on the time that retirees may work for the state to perform COVID-19 emergency-related services without jeopardizing pension payments.

Situation Update

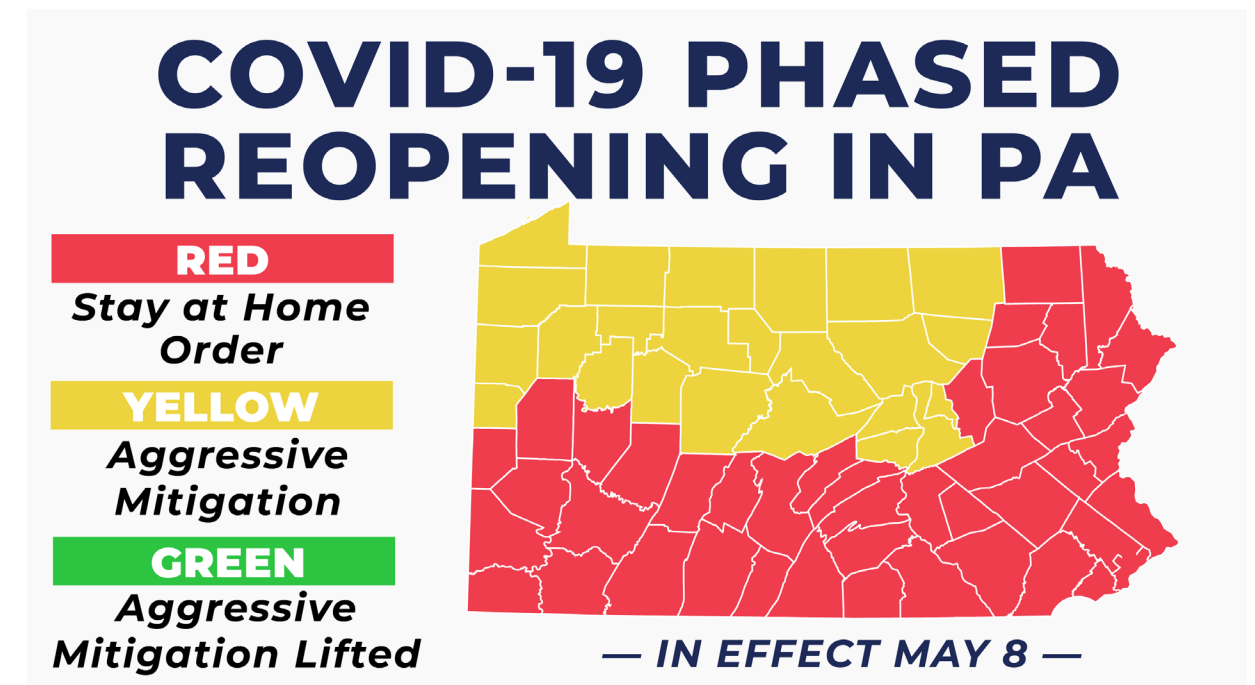
- As of May 3, the Montgomery County Community Based Testing Site (CBTS) has tested **3,509** people at the Montgomery County Community College since testing began at the new site on April 15. [The site was closed on Sunday, May 3.](#)
- As of May 3, the Mohegan Sun CBTS tested **1,171** people to date since testing began on April 20. [The site was closed on Sunday, May 3 due to low registration.](#)
- As of May 3, there are currently **261 (+0)** known testing sites statewide.
- On May 1, Governor Tom Wolf announced the first round of counties that will be moving to the yellow phase under his phased reopening plan beginning at 12:01 a.m. on Friday, May 8, 2020. The 24 counties moving to yellow include Bradford, Cameron, Centre, Clarion, Clearfield, Clinton, Crawford, Elk, Erie, Forest, Jefferson, Lawrence, Lycoming, McKean, Mercer, Montour, Northumberland, Potter, Snyder, Sullivan, Tioga, Union, Venango, and Warren.

Feeding/Food Security

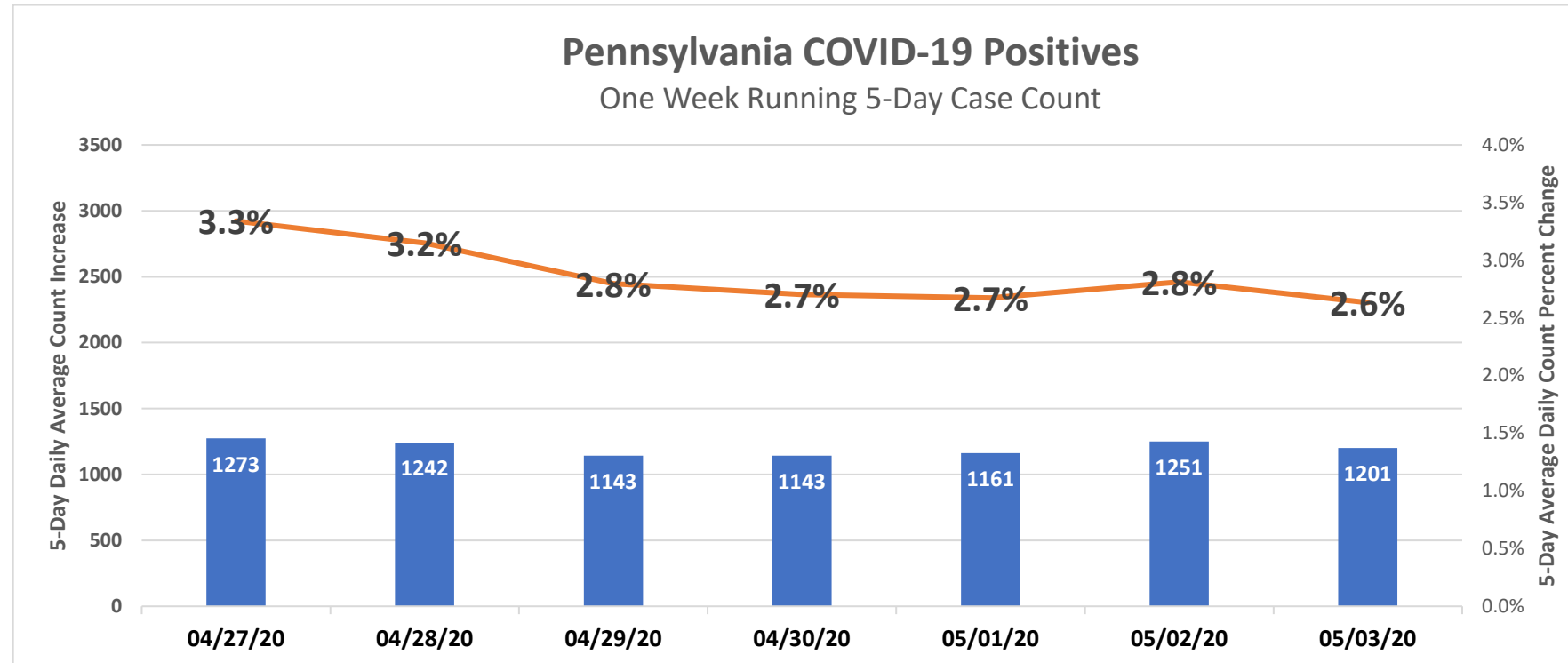
- FEMA provided Pennsylvania with 682,728 shelf-stable meals. To date, DHS has received and redistributed all FEMA-provided meals.
- Multiple counties are reporting a shortage of nutritious, shelf-stable foods for distribution. Berks County is reporting challenges on supplying dry items for emergency boxes.
- In Philadelphia, the school district distributed 162,354 meals to 27,059 students on April 30. This represents a 10% increase from the previous week.



Phased Reopening: Effective Friday, May 8, 2020

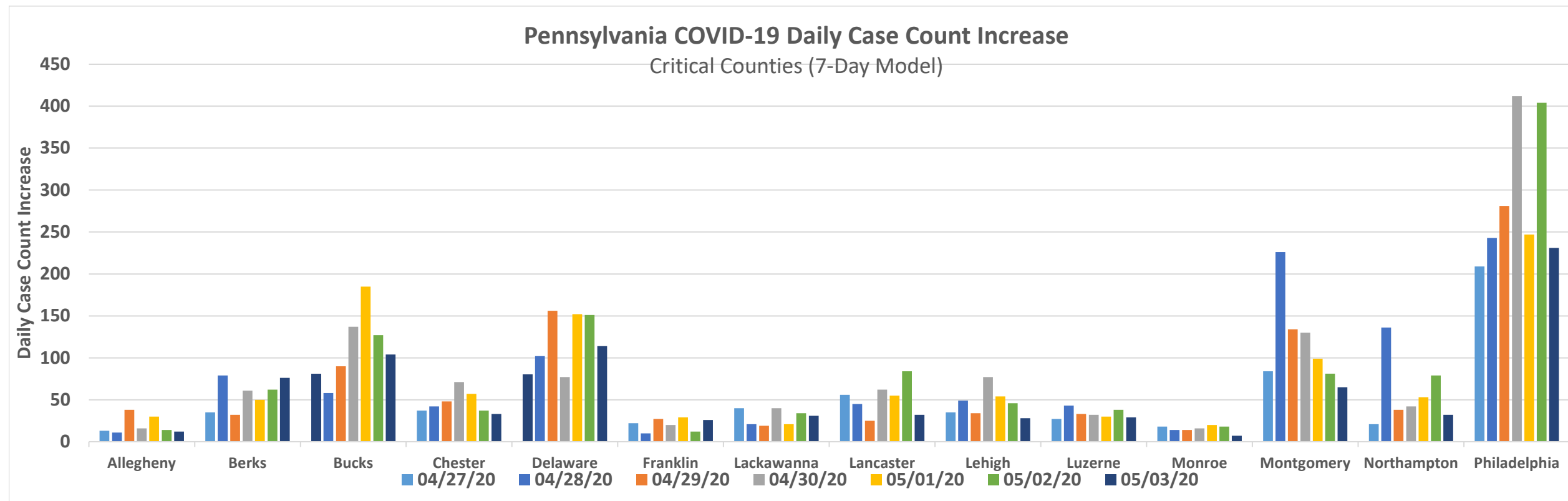


COVID-19 Senior Leaders Brief – May 4, 2020



Display of the daily five-day running average over a seven-day period to show trending

Source: PEMA Situational Awareness Section



COVID-19 Senior Leaders Brief – May 4, 2020

State-Supported Lines of Effort (current as of May 3, 2020 7:00 p.m.)

Mission	Status	Current Activities	Participants	Point of Contact(s)
Mohegan Sun Community Based Testing Site (CBTS)	Operational	<ul style="list-style-type: none"> Went live on April 20, 2020 	DMVA, DOH, DHS, PEMA, PA IMT, Luzerne Co.	Steve Bekanich (PEMA)
Montgomery County Community Based Testing Site (CBTS)	Operational	<ul style="list-style-type: none"> Relocated to Montgomery Co. Community College New site location went live on April 15, 2020 	DMVA, PA IMT, Montgomery Co.	Kevin P. Nelson (PA IMT)
Glen Mills Alternate Care Site (ACS)	In Planning	<ul style="list-style-type: none"> Cots set up Working on wraparound services & clinical staffing 	DMVA, DOH, PEMA, DGS, Delaware Co.	Tom Morgan (Delaware Co. EMA)
East Stroudsburg University Alternate Care Site (ACS)	In Planning	<ul style="list-style-type: none"> Available beds on site: 88 Working contracts for wraparound services Staffing using DMVA (Title 32) 	DMVA, DOH, PEMA, DGS, ESU, Monroe Co., Lehigh Valley Health Network	Ken Long (ESU) TBD (DOH) Bruce Henry (Monroe Co. EMA)
Temple Liacouras Alternate Care Site (ACS)	Suspended Operations	<ul style="list-style-type: none"> 180 beds on site and open for limited patients Staffed using Urban Augmentation Medical Task Forces (UAMTF) (Title 10) Received first patients on April 21, 2020 Will begin shutting down on May 4, 2020 	DMVA, DOH, PEMA, DGS, City of Philadelphia	Christopher Baldini (Phila. EMA) Sam Malone (Phila. EMA)
Pittsburgh Convention Center Alternate Care Site (ACS)	In Planning	<ul style="list-style-type: none"> Site contract finalized on April 17, 2020 	DMVA, DOH, PEMA, DGS, Allegheny Co.	Matt Brown (Allegheny Co. EMA)
Feeding Missions	Operational	<ul style="list-style-type: none"> Supporting local distribution at several sites statewide 	DHS, PANG, Civil Air Patrol	Christine Heyser (PA DHS)
Battelle System (Glen Mills)	Operational	<ul style="list-style-type: none"> Arrived on April 23, 2020 Supports decontamination of PPE for re-use Operational date: May 1, 2020 	PEMA, FEMA, DOH, HAP	HAP
Mortuary Affairs	Operational	<ul style="list-style-type: none"> Relocated refrigerated trailers to several counties statewide Providing support to several counties Southeast mortuary mission began on Monday, April 27, 2020 	DMVA, DOH, PEMA	PEMA
Long-Term Care Facilities Support	Operational	<ul style="list-style-type: none"> Conducting assessments of impacted facilities Providing staff augmentation and training 	DOH, PANG, PEMA	DOH

East Stroudsburg University Alternate Care Site (ACS)



PA National Guard at the Pittsburgh Community Food Bank as part of the State Feeding Mission



Mohegan Sun Community-Based Testing Site – Site Setup



Mohegan Sun CBTS



The Governor's Phased Reopening Plan

PHASE	Work and Congregate Setting Restrictions	Social Restrictions
<p>The RED PHASE, which currently applies to the whole state, has the sole purpose of minimizing the spread of COVID-19 through strict social distancing, non-life sustaining business and school closures, and building safety protocols.</p>	<ul style="list-style-type: none"> Life Sustaining Businesses Only Congregate Care and Prison Restrictions in Place Schools (for in-person instruction) and Most Child Care Facilities Closed 	<ul style="list-style-type: none"> Stay-at-Home Orders in Place Large Gatherings Prohibited Restaurants and Bars Limited to Carry-Out and Delivery Only Only Travel for Life-Sustaining Purposes Encouraged
	<ul style="list-style-type: none"> Reiterate and reinforce safety guidance for businesses, workers, individuals, facilities, update if necessary Monitor public health indicators, adjust orders and restrictions as necessary 	
<p>As regions or counties move into the YELLOW PHASE, some restrictions on work and social interaction will ease while others, such as closures of schools, gyms, and other indoor recreation centers, as well as limitations around large gatherings, remain in place. The purpose of this phase is to begin to power back up the economy while keeping a close eye on the public health data to ensure the spread of disease remains contained to the greatest extent possible.</p>	<ul style="list-style-type: none"> Telework Must Continue Where Feasible Businesses with In-Person Operations Must Follow Business and Building Safety Orders Child Care Open with Worker and Building Safety Orders Congregate Care and Prison Restrictions in Place Schools Remain Closed for In-Person Instruction All businesses must follow CDC and DOH guidance for social distancing and cleaning Monitor public health indicators, adjust orders and restrictions as necessary 	<ul style="list-style-type: none"> Stay-at-Home Restrictions Lifted in Favor of Aggressive Mitigation Large Gatherings of More than 25 Prohibited In-Person Retail Allowable, Curbside and Delivery Preferable Indoor Recreation, Health and Wellness Facilities (such as gyms, spas), and all Entertainment (such as casinos, theaters) Remain Closed Restaurants and Bars Limited to Carry-Out and Delivery Only
	<ul style="list-style-type: none"> All businesses must follow CDC and DOH guidance for social distancing and cleaning Monitor public health indicators, adjust orders and restrictions as necessary 	
<p>The GREEN PHASE eases most restrictions by lifting the stay-at-home and business closure orders to allow the economy to strategically reopen while continuing to prioritize public health. While this phase will facilitate a return to a "new normal," it will be equally important to continue to monitor public health indicators and adjust orders and restrictions as necessary to ensure the spread of disease remains at a minimum.</p>	<ul style="list-style-type: none"> All Businesses Must Follow CDC and PA Department of Health Guidelines 	<ul style="list-style-type: none"> Aggressive Mitigation Orders Lifted All Individuals Must Follow CDC and PA Department of Health Guidelines
	<ul style="list-style-type: none"> Monitor public health indicators, adjust orders and restrictions as necessary 	